



MUSIC IN HOSPITALS

SCOTLAND

communicating through live music

ANNUAL REVIEW 2015-16



'Amy did a fantastic job, she included everyone within a group of profound difficulties and few verbal communication skills. She kept the atmosphere positive and upbeat.'

Robin House, Balloch



Gillian Dinsmore
Scottish Convenor

Whilst still holding onto our core business of talented musicians taking their music to vulnerable and ill people, the past year has seen Music in Hospitals Scotland moving in some exciting new directions.

Fulfilling the aim of tailoring concerts to diverse audience groups, our concerts team now arranges regular sessions at The Hive in the Royal Edinburgh Hospital. Here, with the support of MiH musicians, patients take the lead, bring their own instruments and accompany each other in shared jam sessions. Not to be outdone, at Gartnavel Royal Hospital in Glasgow, with an entirely different genre of music, regular Opera Tea afternoons also help with patients' recovery from mental illness.

A change for MiH came with the retiral in February 2016 of then Chief Executive, Alison Frazer, whose tenure of 25 years has been marked by dedication and distinction. The fact that the transition to her successor Florence Burke has been so smooth is testament to both of them for their professionalism and warmth.

And finally, Eileen Henry succeeds me as Scottish Convenor and Peter Fairlie, is our new Chairman of Music in Hospitals UK. With the new directions in which he and his Trustees are steering the charity, I am confident that, the length and breadth of the country, folk will continue to say to us, "Thank you for the music, the songs you're singing. Thanks for all the joy they're bringing".

Gillian Dinsmore

More than ever, it seems that recognition of the extraordinary impact which engagement with music can have upon our wellbeing is increasing. Listening to music is now recommended, even prescribed, by doctors and we by the same token are venturing into new territories of healthcare, bringing live music into acute settings and high dependency units. We have exciting times ahead.

It's good to see that scientific research is now catching up with what Music in Hospitals and our audiences have known and benefited from for almost 70 years. The difference which

joining with others in shared music sessions can make to mood, anxiety levels and socialisation is something which we should all have access to, irrespective of our health or care needs.

It has been another successful year for Music in Hospitals Scotland and it is with much gratitude that we highlight the commitment of the many talented musicians and generous supporters who make it all possible.



Sally Magnusson
Scottish Patron

Sally Magnusson



Florence Burke
Chief Executive

Since joining Music in Hospitals Scotland earlier this year, I have had some of my busiest and best days in work. It is a rare privilege to be part of an organisation where the differences it makes are so immediate and tangible. My thanks must go to Alison and Gillian for all their help and support in helping me find my feet. For all of those who know them, it will come as no surprise that I also owe a huge debt of gratitude to the staff team for their continued energy and enthusiasm to keep delivering the best live music experience to those who need it most.

As you'll see from the report there has been a lot happening over the past year and a lot more in the pipeline. I'm keen to hear from as many people involved with us as possible. We couldn't continue to do what we do without you, so please get in touch if there's anything you'd like to find out more about. I look forward to hearing from you.

Florence Burke

MUSIC ACROSS SCOTLAND

Concerts across Scotland by Health Board areas.

'Music makes a big difference to the lives of older people, especially those with dementia. People who may not have interaction with others, do, when music is involved.'
Taing House, Lerwick



'Patients are singing songs from yesterday's performance this morning, without prompting.'
Gartnavel Royal Hospital, Glasgow

Orkney: 2

'Takes me back to when I went to the dances.'
Alzheimer's Centre, Nairn

Western Isles: 8

Highland: 164

Grampian: 227

Greater Glasgow & Clyde: 361

Tayside: 212

Fife: 52

Lanarkshire: 74

Forth Valley: 69

'For that hour, residents were able to truly enjoy themselves and let their hair down. Truly amazing to watch and be part of.'
Cumnor Hall, Ayr

Ayrshire & Arran: 71

Lothian: 444

'Patients who are normally quite introverted were found to be joining in and clapping hands in time to the music.'
Western General Hospital, Edinburgh

Borders: 18

Dumfries & Galloway: 58

'Everybody left with smiles on their faces!'
Friday Community Club, Moffat

'We felt like we'd had a top-notch performance.'
Borders General Hospital, Melrose



Our year in numbers

Youngest audience member:	6 months
Oldest audience member:	104 years
Current number of MiH musicians:	97
Number of concerts given during 2015/16:	1,773
Hours of live music provided:	2,215
Approximate number of people reached:	35,440

'Music is such an important part of the children's hospice as regardless of ability or age it engages us and connects with us in a way no other art form can.'
Rachel House, Kinross

Music in Hospitals was established in 1948. Since then, our aim continues to be:

"To raise the spirits, reduce stress and suffering, and bring pleasure to sick and vulnerable adults, children and their families."

Our musicians travel the length and breadth of Scotland, from Shetland to Stranraer and from Stonehaven to Stornoway, every week of the year. They bring the benefits of engagement with professional live music to people of all ages, from new babies to centenarians, and to everyone in between.

'They were great! I could have listened to them all night.'
Susan Carnegie Centre, Brechin



OUR AUDIENCES

Music in Hospitals

630 live music sessions were given by our musicians in hospital settings throughout Scotland during 2015/16. Acute wards, neurological rehabilitation centres, mental health settings, elderly care and stroke units are just some of the areas within hospitals in which we make music. From babies and young children to the elderly, our musicians engage with people of all ages, bringing live music onto wards, communal areas and directly to people's bedsides.

'The playroom was a very happy place for the full hour, with lots of enthusiastic and smiling children and adults.'

Royal Hospital for Sick Children, Edinburgh

'One patient had never shown an interest in any kind of music until this concert. Now we know how to support him.'

Migdale Hospital, Bonar Bridge



Photo: Kirstyn Knowles

Music in Care Homes

928 performances were given in care and residential homes during 2015/16. From the Borders up to the Shetland Isles, and everywhere in between, we're proud to have reached thousands of people in care homes across the country. The majority of people we meet in care homes are older, many of whom have dementia. Ex-service personnel, people with additional support needs or mental health conditions also benefit from live music in these settings.

'It fairly cheers you up, having live music.'

Nordalea Care Home, Baltasound

'Having someone so professional coming along and entertaining our service users is such a bonus. Residents so enjoy it and it makes them feel worthwhile. Music is one of the best therapies they can receive.'

Beachview Lodge, Brora



Photo: Jeff Holmes



Photo: Kirstyn Knowles

Music in Day Centres & Schools

We gave 152 live sessions in day centres and schools during 2015/16. These sessions engage audiences who receive support from a wide variety of services including: mental health services, stroke support, learning disability support, blind group support, dementia support clubs, neurological support and social clubs for older people. We have also enjoyed bringing lively performances to many schools across Scotland which provide additional support for young people and their families.

'The performers had all clients singing and clapping. A very good afternoon was had by all. We were all bubbling with joy. BRILLIANT!!'

Gretna Day Centre, Gretna

'It was lovely to see one man completely engaged with Heather as she sang to him. He's usually quite an agitated person, due to his multiple conditions, but was very calm and emotionally moved.'

MS Therapy Centre, Lochgilphead



Photo: Ben Mullay

OUR AUDIENCES

Music in Hospices

63 live music sessions were given in Scotland's hospices during 2015/16. We reached hospices far and wide this year, in Inverness, Elgin, Oban and Stornoway as well as palliative care settings across the central belt. The two children's hospices, Rachel House and Robin House, also benefited from regular sessions with our musicians.

'It was lovely to see all the brothers and sisters, cousins, friends, aunts, grans, staff and volunteers all having such good fun singing and enjoying the music.'

Rachel House, Kinross

'Music makes a huge difference to our hospice patients and staff. It is completely uplifting and all together fun. Please continue this fantastic work!'

Highland Hospice, Inverness



Touring with TOTAL E&P UK Limited

Total E&P UK Limited have been in partnership with Music in Hospitals Scotland for 36 years. Thanks to their generous support, this year, we have been able to reach audiences once again in Aberdeen, across the North East, the Highlands and Islands and we made it back up to the Shetland Islands too.



Photo: Ben Mullay



Photo: Davy McMartin



Photo: Ben Mullay

Shetland Adventures

Along with guitars, mandolin, small pipes, harmonicas and their voices, MiH musicians, Davy McMartin, Charlie Gorman & Derek Richardson spent a week travelling across the Shetland Islands giving performances in care settings for people of all ages. Scottish traditional music, along with contemporary folk and some country songs were the order of the week with all audience members being encouraged to make requests, to join in and participate in the music sessions.



Photo: Ben Mullay

'It was without question, one of the best events we have had here. It was lively, full of fun and had such a positive effect on people in attendance.'
Walter & Joan Gray Home, Scalloway

'Music and singing is very therapeutic, especially for patients.'
Gilbert Bain Hospital, Lerwick

'This music event enhanced our residents' lives greatly. Music brings a great deal of joy to people with dementia.'
Edward Thomason House, Lerwick

Magic Moments with the ScottishPower Foundation
- powering concerts across Scotland

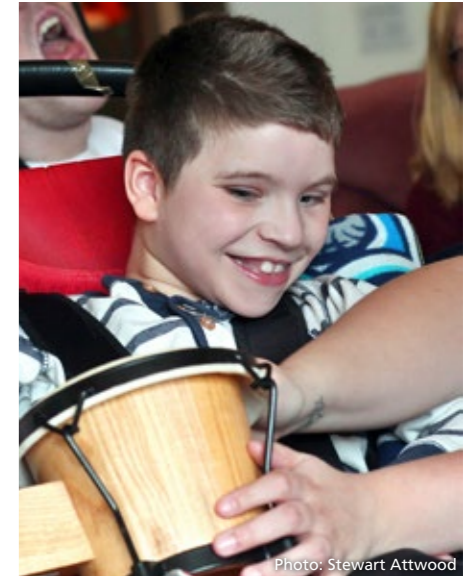
We received continued support from the ScottishPower Foundation during 2016, for the delivery of 50 live concerts across Scotland. These are taking place in isolated rural areas and care settings situated within areas of multiple deprivation.

The project will reach approximately 1,000 people in care by the end of March 2017.

'One of the residents who has been having a difficult time recently, said "that made my day", he smiled and joined in throughout. It was a joy to see him so happy.'
Millbrae Care Home, Coatbridge



Photo: Stewart Attwood



Over the Sea to Skye

Support from GlaxoSmithKline enabled us to return to care settings on the spectacular Isle of Skye. MiH duo singer Kirsten Easdale and accordionist Gregor Lowrey gave live performances for audience members in Broadford, Portree and Uig.



From MiH musician Kirsten Easdale's tour diary:

*"It is always nice if we can include a local song or tune and on this occasion we performed Blue Skies, The Skye Boat song (which must be our most requested song!) as well as a couple of Gaelic waltzes and songs for the Gaelic speakers who were there. However, not everyone we come across was a Sgiathanach (person from Skye), and we had one chap join in and help us with *Maybe it's because I'm a Londoner.*"*

"That took me back – they don't make songs like them anymore."
An Acarsaid, Broadford



'The musicians were very successful in the way they got the audience involved. Given the correct encouragement, you can see a different side to some individuals.'
Tigh na Drochaid, Portree

A CLOSER LOOK... mental health and recovery

Mental Health Awareness Week this year had a focus on relationships. These bonds and ties with others are important to our well-being, and for those people with a diagnosis of mental illness, relationships can often play an even more important role in their recovery. It is with this in mind that we have been developing a series of services, specifically designed to encourage relationship building, new bonds and friendships within specific audience groups.

JAMMING at THE HIVE in partnership with SAMH and the Royal Edinburgh Hospital

Every fortnight, MiH singer and guitarist, Charlie Gorman, sits within a circle of chairs at the Hive café space at the Royal Edinburgh Hospital and is joined by service users. Here, the live music is co-created by everyone present. Audience members are also the performers; they take the lead, perform and play their own instruments whilst being accompanied and encouraged by Charlie. They too, are Music in Hospitals.

The group size taking part in the Music Jam sessions has grown over the past year, now with up to 30 people taking part at a single get together. Care staff at the Hive tell us that these events engender a sense of control, involvement and investment for the people within their care.



Photo: Ben Mullay

'*Music Jam* is one of our busiest activities and is loved by everyone who attends.

There are a few service users who come every week and the buzz they get from singing with Charlie is so inspiring to watch.

Patients' faces really do brighten up after they have sung something at the group, they are always so proud of themselves (rightfully so) and the whole group is always so supportive of each other on Charlie's lead.

The group gives people who are often feeling powerless the chance to express themselves and play us their favourite song, which is also a wonderful opportunity to get to know the patient's characters and personalities, which hopefully rebuilds their identity and recovery.'

Jennifer Learmonth,
Assistant Activities Worker,
The Hive

OPERA TEA with ART IN THE GART Gartnavel Royal Hospital

It's a Sunday afternoon at Gartnavel Royal Hospital in Glasgow. Patients, their family members and staff begin to gather within a public area in the hospital and are met by musicians: singers, pianists or cellists and violinists. An hour of well-known opera favourites and arias soar to the top of the building. Here, live music is designed to be shared and to encourage service users, staff, family members and people from the local community to come together to be a part of these afternoon concerts.



Fiona Sinclair, Volunteer Services Manager at the hospital, manages the 'Art in the Gart' programme, which brings multiple art forms, performances and activities into the wards and communal spaces within the hospital.

'The Opera Tearoom is the legacy of one man, an opera singer, using our acute mental health services. Since the ethos of Art in the Gart is to respond to the passions, needs and likes of patients, the Opera Tearoom was born. Carmen was his favourite opera and so our first Sunday concert was "Carmen with Cupcakes". The concerts still continue on a Sunday, once a month and with the participation of Music in Hospitals musicians.'

Fiona Sinclair,
Volunteer Services Manager - North West Sector & Lead,
Art in the Gart

'Your musicians have just finished their Sunday live music session and it has to be one of the most moving, participative sessions I have seen.'
Member of staff,
Gartnavel Royal Hospital



Call to action!

The insights, support and collaboration of care staff at the Royal Edinburgh Hospital and at Gartnavel Royal Hospital, and their deep understanding of the people they support, have been both the foundations and catalysts of these successful projects.

We are very keen to replicate these models of service with many more care staff in healthcare settings in other parts of Scotland. We want to work alongside you, to learn how our service can best support you, your aims and the people within your care. Please get in touch on 0131 556 5848 to discuss your musical ideas and aims with us - we'd love to hear from you.



MUSICIANS

To put it simply, we'd have no music without our musicians!

As an organisation, Music in Hospitals Scotland is committed to ensuring that as many people as possible across the country are able to benefit from live music. The musicians who work with us are a key ingredient to our achieving this.

'The concert provided was fantastic and the interaction from the singer with the residents was amazing. He had them all singing and laughing, also some dancing. It certainly lifted the mood of all and left a smile on all our faces, including the staff!'

Parklands Care Home, Alloa

Auditions

To cater for the range of musical tastes and settings, all of our musicians have gone through our audition process. The auditions test musicianship, the ability to design a short programme to meet our audiences' needs and most importantly, they ensure our musicians possess a natural flair for engaging and communicating with people. This year's auditions had applicants from jazz, Scots traditional, folk, pop and classical backgrounds.

'Working for MiH has been a life changing experience for me that I cherish and feel a huge amount of pride in being able to do.'

John Davidson, singer & guitarist

'We try to have something for everyone, so that we can hit on those cultural references which speak to certain generations. These are important in that they can unlock long forgotten memories, particularly for those with dementia. When this happens, it is one of the most rewarding parts of being an MiH musician.'

Kirsten Easdale & Gregor Lowrey, singer & accordionist



Photo: Ben Mullay



Photo: Ben Mullay

Mentoring

We are working hard to ensure that the musicians have the support they need to develop as artists able to connect with our audiences. Funding from a small legacy meant that this year we were able to pilot a mentoring scheme for those musicians new to working with us. Drawing on the wealth of talent, and willingness to help a fellow musician, meant we had no difficulty pairing people up with our longer-established musicians. We'll be evaluating the pilot, but the early indications are that it is proving a valuable addition to the support already on offer.

Forum

Most musicians work as soloists or in small groups of two or three. As Music in Hospitals Scotland musicians, we aim to provide a range of opportunities for them to come together to meet and share their programmes, ideas and stories with each other. Our first formal Forum took place this year. As well as being a fun and creative event it also generated lots of ideas for future training, development and networking.



'The best part for me was noticing that a handful of audience members who were initially distant, responded to the music and by the second half of the concert were singing along with big smiles on their faces – amazing to see.'

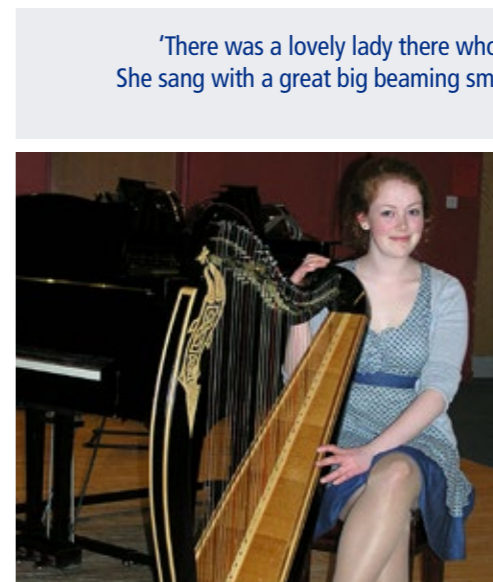
Neil Sturgeon, singer & guitarist

'I had a lovely dance with a youngster of 106!! She was the most positive person I have met in a long time. The staff were amazed when she asked me up to dance and was rather reluctant to sit down (after she had worn ME out!).'

Billy Strachan, tenor

'6 nurses on a break joined me in creating a "girl backing band" for one of Ciaran's songs!'

Heather Innes, singer & bodhran



'There was a lovely lady there who sang beautiful descants with nearly every song. She sang with a great big beaming smile on her face - it was a joy to see and hear her.'

Alex Baer, soprano

'Some of the patients here had been at our previous concert on this ward. One patient, a former guitarist, who still forms all the chord shapes from his bed, complimented us again on playing no wrong notes!'

David Britain & Gordon Inglis, singers & guitarists



'We dedicated "Jean's Reel" to a lady called Jean. She had been very unresponsive until then, but mouthed 'thank you' to me afterwards.'

Kate Badcock & Roddy Johnston, flute, guitar, saxophone, pipes, voice & fiddle



Thank you Light & Bright

After performing with Music in Hospitals for 20 years, husband and wife duo, Ann Baird and Bela Simandi (soprano & pianist) have stepped down from their roles as MiH musicians. We will miss them both and are hugely grateful for their support since 1996 and for the many hundreds of concerts they've given.

Ann Baird: What makes it all worthwhile

"A visitor came in, pulled up a chair and sat close to her mother, a resident. As I started to sing the lady leaned close to her mother and with their heads nearly touching they sang almost every song in our entire program. After the concert the daughter came up to me and said, "We were a musical family and always enjoyed singing together. Thank you for giving my mother back to me today."



FUNDRAISING AND MiH EVENTS

A big thank you to everyone who has supported us this year.



Women of Scotland Lunch 2016



The Women of Scotland Lunch 2016 raised an incredible £23,000 for MiH Scotland. We'd like to thank everyone who donated and supported MiH, all guests, the WOSL Committee and the fantastic speakers: Dr Susan Shenkin, Elaine C Smith, Rev Sarah Ross and Linda Urquhart OBE.

Ellen's Recital

Ellen McNeal (centre right) gave a fantastic summer performance at her local church, raising £250:

"I raised this money at a recital I performed at my local church in Edinburgh. Really happy to donate to such a great cause."



A Cappella Society Supports MiH

St Andrew's University A Cappella Society has made Music in Hospitals its Charity of the Year once again, raising support for our concerts in Fife.



USSO

The Universities of Scotland Symphony Orchestra gave their summer concert in aid of MiH Scotland, raising £1,380. Spine-tingling performances of works by Williams, Bernstein & Dvorák had feet stomping and shouts of 'MAMBO' filling St Stephen's in Edinburgh.

Many thanks to the orchestra, to the audience and to conductor Chris Swaffer for bringing it all together - a brilliant night.



Pedal Power

Marc Spencer-Bowles, who used to be a musician for MiH, took on the London Prudential Bike Ride in 2016 and raised over £1,000 for our concerts across Scotland.



Edinburgh Telephone Choir

The choir's 70th springtime concert ran for three nights at the Churchill Theatre in Edinburgh during April and raised £600 for MiH.



Mash House Gig

A 'Best of Scotland' gig (above) was organised by Napier University students Ailie Falconer, Sophie McCallum, Leigh Innes & Katie McDonald at Edinburgh's Mash House earlier this year. An incredible £525 was raised.



Edinburgh Royal Choral Union

Many thanks to the Edinburgh Royal Choral Union for raising £240 for MiH at their festive Christmas Concert. Many thanks also to conductor Michael Bawtree, to soprano Sarah Powers and to everyone who donated so generously into our collection buckets.



BBC Music Day

On Friday 3rd June 2016 Music in Hospitals gave over 100 live concerts across the whole of the UK in hospitals, hospices, care homes, day centres and special schools in support of BBC Music Day 2016. It was our busiest day ever, in the history of MiH! Many thanks to everyone who took part.

Aberdeen Musical Medics

Aberdeen Musical Medics supported MiH once again this year, raising over £350 at their winter concert.

Dancing Delights

A ceilidh, swing dancing and much cake! Thanks to the guests of Jack Lavender's farewell party in Edinburgh over £300 was raised for MiH.

Making Music with Scotland's Garden Scheme

MiH flautist Louise Burnet raised over £500 for MiH when she opened her stunning garden overlooking the Gareloch in May 2016, as part of the Scotland's Garden Scheme. A wander through the bluebells, rhododendrons and azaleas was followed by teas and home baking and live classical music performed by Louise Burnet, harpist Megan Garrity and pianist Stephen Adam.



Making Friends

Gillian Dinsmore held an event in support of MiH in her own home to raise Friends and funds for MiH. Guests were treated to fizz, canapés and a live recital from MiH musicians Alex Baer and Bob Simans. Generous donations raised £1,500 for our work across Scotland.



FRIENDS AND LOCAL AMBASSADORS



MiH Friends

We like our Friends very much indeed, and without them we'd be a very quiet charity. Our Friends' support plays a central part in enabling our musicians to perform in care units throughout the whole of Scotland.

For a minimum subscription of just £25 a year or a standing order from as little as £2 a month, our Friends receive priority bookings for all our events, the Friends' newsletter, and entry into a monthly draw to win RSNO tickets. We are immensely proud to have 244 Friends of MiH.



Their collective support helps us to reach over 35,000 people in care each year. If you would like to join our Friends group and support our musicians' work, please contact the office on **0131 556 5848** and we'll sign you up!

Left: Ailie Falconer, who organised the Mash House Gig in aid of MiH

Right: Local Ambassadors L to R: Liz East, Fiona Dinsmore, Grace Durham, Anne Sturrock, Sheila Watt

MiH Local Ambassadors

Our Local Ambassadors support us by simply spreading the word about Music in Hospitals in their local area.

They do this in a variety of ways: by nominating us for funds in a local supermarket, volunteering at events, collecting cheques on behalf of MiH, promoting MiH Christmas cards, setting up fundraising opportunities, having a photo taken as a local representative of MiH in local press or simply spreading the word to friends about the charity.

Our Local Ambassadors choose exactly how they go about supporting the charity, there's no required level of involvement, nor job description as such! Whatever activities our Local Ambassadors take on, we provide office support every step of the way. In 2017 we will meet 3 times a year, on varying days of the week, in different locations across Scotland. We are keen to welcome new Local Ambassadors to join our team, from all over Scotland. If this appeals to you and you think you might be interested in coming along to a meeting to find out more, please contact Sarah at Music in Hospitals: sarah@musicinhospitalsscotland.org.uk **0131 556 5848**



ACCOUNTS 2015/16

Income: £438,186

Grants, donations & legacies:	£332,599
Hospitals & care centres:	£66,530
Fundraising events:	£21,158
Investments:	£17,899

Expenditure: £465,665

Direct charitable expenditure	£363,219	78%
<i>(costs of providing live music for people in care)</i>		
Fundraising & publicity:	£83,820	18%
Governance:	£18,626	4%

Music in Hospitals

SCOTLAND

Patron: Sally Magnusson

COMMITTEE

Convenor: Gillian Dinsmore (to 14 July 2016)
Eileen Henry (from 15 July 2016)

Members:

Dr Sivasankaran Sashidharan
Robin Barr
Dr William Boyd (to 10 November 2016)
William Cowling
Margaret Donaldson
Peter Fairlie
Eileen Henry
Dr Alan Jacques
Prof Jean Ker (from 10 November 2016)
Helen Lawson (to 10 November 2016)
Jennifer Logan
Lorimer Mackenzie
Dr Fiona Robertson
Sheila Watt

Scotland Office

Florence Burke
Sarah Bax
Laura Dancer
Penny Johnston
Kirstyn Knowles
Andrew Macaulay
Kirsty Walker (maternity cover)
Bernadette Wright

UK

Patron: HRH The Duchess of Gloucester GCVO
President: Sir Thomas Allen CBE
Presidents Emeriti: Nella Kerr MBE
Sylvia Lindsay MBE
Katie Derham
Dame Evelyn Glennie DBE
Julian Lloyd Webber
Dame Vera Lynn DBE
Dame Felicity Lott DBE
Richard Stilgoe OBE
Chairman: Michael Cooper-Mitchell (to 31 March 2016)
Peter Fairlie (from 1 April 2016)
Vice Chairman: Gillian Dinsmore (to 6 October 2016)
Peter Fairlie (from 6 October to 31 March)
John Middleton (from 1 April 2016)
Hon Treasurer: Arthur Davey

TRUSTEES:

Adrian Platt (to 6 October 2016), Alan Jacques, Arthur Davey, Fiona McIntosh (from 6 October 2016), Helen Rayfield, Gillian Dinsmore (to 6 October 2016), Ingrid Surgenor MBE (from 6 October 2016), Jeremy Huw (from 6 October 2016), John Middleton, Roger Luxmoore-Styles, Michael Cooper (to 6 October 2016), Michael Taylor (to 6 October 2016), Mike Cooper-Mitchell (to 6 October 2016), Peter Fairlie, Prue Keely Davies (from 6 October 2016), Dr Sivasankaran Sashidharan, Sarah Mallock (from 6 October 2016)

STAFF CHANGES

Office Administrator

Farewell

Avril

In June 2016 we said a very fond farewell to Avril Abbott, our Office Administrator who had been with MiH for 4 years. We wish Avril all the best with her new job.



Welcome

Andrew

We welcomed Andrew Macaulay to our office team in August 2016. Andrew previously worked with Edinburgh University and as our new Office Administrator is busy keeping us all firmly on track!



Change of Convenor

Gillian Dinsmore

After 35 years with the charity as Convenor, Committee Member, Trustee and all round unstoppable supporter, Gillian Dinsmore stood down from the above roles in October 2016. We are hugely grateful to Gillian for everything she has done to support MiH over the years and we're relieved that she will continue to be one of our Local Ambassadors in Glasgow.



Eileen Henry

Into the role, we are delighted to welcome Eileen Henry who has worked alongside Gillian in the Scottish Committee of MiH since 2014. Eileen is a retired lawyer whose speciality was in executory administration and law for the elderly. In the past Eileen also served on the Children's Panel. As well as having a particular interest in the benefits of music for all ages and capabilities, Eileen is a keen theatre goer. We're very much looking forward to working alongside Eileen during her Convenor-ship.



Chief Executive Farewell Alison

After an incredible 25 years with the charity Alison Frazer retired as Chief Executive of MiH Scotland at the end of February 2016. Since then, Alison has been awarded an MBE for services to patients in the Queen's Birthday Honours. We are thrilled that Alison's efforts have been recognised in this way.



2015-16 SUPPORTERS

Thank you to all our supporters. We are immensely grateful to all of the charitable trusts, businesses, individuals and Friends of Music in Hospitals for their generous support, without which, none of our work could take place.

Major contributions during 2015-16 have come from the following:

Aberbrothock Skea Trust
Aberdeen Musical Medics
Alexander Moncur Trust
Annie McLean Trust for the Elderly
Archie Foundation
Balfour and Manson
Bank of Scotland Foundation
Best Trust
Binks Trust
Broughton Spurtle
Bruce Charitable Trust
Cairn Energy plc
Church of the Good Shepherd, S. Queensferry
Co-operative Fund
Condies Chartered Accountants & Business Advisers
ConocoPhillips (UK) Ltd
Craignish Trust
Crerar Hotels Trust
Crosbie Matthew Funeral Directors
Cruden Foundation
D W T Cargill Fund
Davidson (Nairn) Charitable Trust
Dunard Fund
Edinburgh & Lothians Health Foundation
Edinburgh Royal Choral Union
Forteviot Charitable Trust
Foundation Scotland
Friends of Pitlochry Community Hospital
Friends of Woodend Hospital
Gannochy Trust
Gibson Graham Charitable Trust
Glasgow Nursing & Medical Relief Association
GlaxoSmithKline
Gordon Fraser Charitable Trust
Hayward Sanderson Trust
Heiton and Morebattle Choir
Helensburgh Lawn Tennis Club
Hilton in the Community Foundation
Hinshelwood Gibson Trust
Hugh and Mary Miller Bequest
Hugh Fraser Foundation
J & J R Wilson Trust
James C Hardie Charitable Trust
James Wood Bequest Fund
Jennie S Gordon Memorial Foundation
John Lewis, Edinburgh
John Younger Trust
Kennedy Charitable Trust
Leith Neighbourhood Partnership
Lothian Buses Employees' Charities Fund
M V Hillhouse Trust
MacLennan Trust
Martin Charitable Trust
Martin Connell Charitable Trust
Monifieth Parish Church of Scotland Guild
Morningfield Association
Morrisons Foundation
Mrs A A Clutterbuck Trust
Mrs J T Isles-Denny's Trust
Nancie Massey Charitable Trust
Nationwide Building Society
New Kilpatrick Church
Paterson Logan Charitable Trust
Penpont Charitable Trust
PF Charitable Trust
Pixel Fund
Plum Trust
PoppyScotland
Queensberry House Trust
Robert Barr Charitable Trust
Robertson Trust
Ronald Miller Foundation
Rotary Club of Dalkeith
Rotary Club of Edinburgh (Jubilee Charity Fund)
Rotary Club of North Berwick
Saints and Sinners Club of Scotland
Scottish Government
Scottish Power Foundation
Sick Kids Friends Foundation
Souter Charitable Trust
SSE Community Fund
St Cadoc's Bridge Cafe, Newton Mearns

St Katharine's Fund
St Nicholas Primary School, Broxburn
Stafford Trust
Stevenston Charitable Trust
TA Fund
Talteg Ltd
Tay Charitable Trust
Tomian Jewellers
TOTAL E&P UK Limited
Trades House of Glasgow Commonwealth Fund
Universities of Scotland Symphony Orchestra
University of St Andrews Charities Campaign
Verden Sykes Trust
W G Forsyth Fund
Waitrose, Byres Road, Glasgow
Whitaker Charitable Trust
William & Patricia Venton Charitable Trust

Local Councils providing support in 2015/16

Angus Council
City of Edinburgh Council
Dundee City Council
East Dunbartonshire Council
East Lothian Council
Falkirk Council
Glasgow City Council
Highland Council
Midlothian Council
North Lanarkshire Council
Perth & Kinross Council
Renfrewshire Council
South Ayrshire Council
West Dunbartonshire Council
West Lothian Council

Additional thanks to those who would prefer their support to remain anonymous and to the many individuals who have also given donations throughout the year.

AYRSHIRE & ARRAN

Alloway, Rozelle Holm Farm NH
 Ardrossan, South Beach House
 Ayr, Ailsa Hospital
 Ayr, Airlie House
 Ayr, Ayrshire Hospice
 Ayr, Broomfield House
 Ayr, Cumnor Hall
 Ayr, Glenfairn House
 Ayr, Heathfield House CH
 Ayr, Overmills Day Centre
 Ayr, South Lodge CH
 Ayr, Stroke Folk
 Ayr, Templeton House
 Beith, Alzheimer Scotland
 Beith, Spiers CH
 Beith, Thistleknowe CH
 Cumnock, East Ayrshire Community Centre
 Dalmellington, Dalmellington Care Centre
 Dalmellington, Glebe House
 Dalry Community Centre
 Dundonald Nursing Home
 Galston Friendship Club
 Galston, West Park RH
 Girvan, Ainslie Manor NH
 Girvan, Hillcrest CH
 Irvine, Abbeyfield House
 Irvine, Greenbank NH
 Kilmarnock, Crosshouse Hospital
 Kilmarnock, The Howard Centre
 Kilwinning, Fergushill Adult Resource Centre
 Maybole, Fairknowe House NH
 Patna, Burnfoot House CH
 Prestwick, Berelands House CH
 Prestwick, Biggart Memorial Hospital
 Prestwick, Queen's CH
 Stewarton, St Columba's Friendship Group
 Whiting Bay, Cooriedoon CH

BORDERS

Coldstream, Lennel House
 Galashiels Nursing Home
 Galashiels, Waverley Home
 Hawick, Deanfield
 Jedburgh, Knowesouth NH
 Kelso Hospital
 Kelso, Grove House
 Kelso, Queen's House
 Lamancha, Whim Hall NH
 Melrose, Borders General Hospital
 Peebles NH

DUMFRIES & GALLOWAY

Annan Court CH
 Beattock, Beattock Day Centre
 Bostue, Senwick House
 Castleg Douglas, Dunjop NH
 Dalbeattie, Munches Park House
 Dumfries Adult Resource Centre
 Dumfries, Acorn House
 Dumfries, Charnwood Lodge
 Dumfries, Dalawoodie House
 Dumfries, Goldielea Home
 Dumfries, Lochduhar NH
 Dumfries, Parkhead Court Sheltered Housing
 Dumfries, Roseland House
 Gatehouse of Fleet, Fleet Valley CH
 Kirkcudbright, Merse House
 Lockerbie, Westfield CH
 Moffat, Bankfoot House
 Moffat, The Friday Community Club
 Newton Stewart, Ashgrove Court
 Newton Stewart, Cornwall Park
 Newton Stewart, Cumloden Manor NH
 Newton Stewart, Glentroof Day Centre
 Newton Stewart, The Riverside Centre
 Palnackie, Barlochan House
 Sanquhar, Queensberry CH
 Stranraer, Thorney Croft CH
 Thornhill Hospital
 Thornhill, Briery Park CH

FIFE

Burmtisland, Linksview Home
 Cupar, Lunardi Court
 Cupar, Northeden House
 Cupar, Pitlair House
 Cupar, Stratheden Hospital
 Dunfermline, Canmore Lodge
 Dunfermline, Dollar Court
 Dunfermline, Jean Mackie Centre
 Dunfermline, Matthew Fyfe Home
 Dunfermline, Newlands CH
 Dunfermline, Queen Margaret Hospital
 Glenrothes, Abbotsford NH
 Kincardine-on-Forth, Forth Bay CH
 Kirkcaldy, Victoria Hospital
 Kirkcaldy, Victoria Hospice Unit
 Lochgelly, Jenny Gray House
 Newport on Tay, Leng Resource Centre
 Rosyth, Orchard Head House
 St Andrews House CH
 St Andrews, Balnacarron CH
 St Andrews, Gibson House CH

FORTH VALLEY

Airth, Airthrey CH
 Alloa, Clackmannan Community Hospital
 Alloa, Parklands CH
 Alloa, The Friendship Club
 Balfron, Strathendrick
 Bannockburn, Fairview CH
 Bo'ness Hospital
 Bridge of Allan, Allan Lodge
 Callander, Ashlea House CH
 Denny, Strathcarron Hospice
 Dunblane, Randolph Hill NH
 Falkirk Community Hospital
 Falkirk, Burnbrae Home
 Falkirk, St Margaret's House
 Falkirk, Summerdale Home
 Grangemouth, Cunningham House
 Grangemouth, Oswald Avenue Day Centre
 Larbert, Bellsdyke Hospital
 Larbert, Forth Valley Royal
 Larbert, Torwoodhall CH
 Polmont, Oakbank CH
 Stirling Community Hospital
 Stirling, Annfield House
 Stirling, Wallace View CH
 Stirling, Wellgreen CH
 Stirling, William Simpson's Home

GREATER GLASGOW & CLYDE

Alexandria, Vale of Leven Hospital
 Annesland, Erskine Home
 Balloch, Robin House
 Bishopton, Erskine Home
 Bishopton, Erskine Park Home
 Clydebank, St Margaret's Hospice
 Dumbarton, Castle View NH
 Dumbarton, Strathleven CH
 Erskine, Erskine Mains Home
 Erskine, Little Inch Erskine Care Centre
 Glasgow, Antonine House
 Glasgow, Applecross NH
 Glasgow, Ardenraig CH
 Glasgow, Balmanno House
 Glasgow, Birdston NH
 Glasgow, Boquhanra House
 Glasgow, Buchanan House CH
 Glasgow, Buchanan Lodge CH
 Glasgow, Burnfield CH
 Glasgow, Canniesburn NH
 Glasgow, Clarence Court
 Glasgow, Craighbank CH
 Glasgow, Crossmyloof Resource Centre
 Glasgow, Cumbræ House
 Glasgow, Darnley Court Nursing Centre
 Glasgow, David Cargill House

GRAMPIAN

Glasgow, Davislea CH
 Glasgow, Deanfield CH
 Glasgow, Drumchapel Hospital
 Glasgow, Drumry House
 Glasgow, Eastwood Court NH
 Glasgow, Ferguson Anderson Centre
 Glasgow, Flourish House
 Glasgow, Four Hills NH
 Glasgow, Fulton Lodge
 Glasgow, Gartnavel Royal Hospital
 Glasgow, Glenafton NH
 Glasgow, Golfhill NH
 Glasgow, Greenfield Park Care Centre
 Glasgow, Hawthorn House
 Glasgow, Jewish Care Scotland (Thistle Club)
 Glasgow, Jordanhill CH
 Glasgow, Lammermoor Gardens
 Glasgow, Leverndale Hospital
 Glasgow, Lilyburn CH
 Glasgow, Loancroft House
 Glasgow, Mansionhouse Unit Hospital
 Glasgow, Marie Curie Hospice
 Glasgow, Mearnskirk House
 Glasgow, Merrylee Lodge
 Glasgow, Mugdock House CH
 Glasgow, Nazareth House
 Glasgow, Norwood House
 Glasgow, Oakbridge CH
 Glasgow, Oran Street Day Centre
 Glasgow, Quayside NH
 Glasgow, Rannoch House
 Glasgow, Rodger Park CH
 Glasgow, Rowantree NH
 Glasgow, Rowantree Rodgerpark CH
 Glasgow, Royal Hospital for Children
 Glasgow, Southern General Hospital
 Glasgow, Stobhill Hospital
 Glasgow, The New Victoria Hospital
 Glasgow, Thornwood Hall
 Glasgow, Whitecraigs CH
 Glasgow, Williamwood House
 Greenock, Alt-na-Craig House
 Greenock, Ardgowan Hospice
 Greenock, Bagatelle NH
 Greenock, Glenfield Home
 Greenock, Mariners' Home
 Inchinnan, Little Inch CH
 Paisley, Accord Hospice
 Paisley, Dykebar Hospital
 Paisley, Hunterhill CH
 Paisley, Montrose CH
 Renfrew Care Home

Aberdeen, Balnagask House
 Aberdeen, Broomhill Park
 Aberdeen, Cloverfield Grove
 Aberdeen, Craigievar Court
 Aberdeen, Forestgait CH
 Aberdeen, Hamewith Lodge
 Aberdeen, Hawkhill House NH
 Aberdeen, James Tyrrell Centre
 Aberdeen, Jesmond CH
 Aberdeen, Kingsmead Home
 Aberdeen, Littlemill East NH
 Aberdeen, Millbank House
 Aberdeen, Northcote Lodge CH
 Aberdeen, Riverside CH
 Aberdeen, Summerhill Day Centre
 Aberdeen, Rosewell House
 Aberdeen, Roxburghe House
 Aberdeen, Royal Aberdeen Children's Hospital
 Aberdeen, Royal Cornhill Hospital
 Aberdeen, Royal Infirmary
 Aberdeen, Rubislaw Park CH
 Aberdeen, Simeon Care for the Elderly
 Aberdeen, Stockton Grange CH
 Aberdeen, The Cowdray Club
 Aberdeen, Tor-Na-Dee Care Centre
 Aberdeen, Woodend Hospital
 Aberdeen, Woodside CH
 Aberlour, Speyside CH
 Aboyne, Allachburn CH
 Aboyne, Praesmohr House
 Alford, Hamewith Court
 Ballater, Craigard House CH
 Balmedie House
 Banchory, Annesley House
 Banchory, Bellfield Home
 Banchory, Pitmurchie House
 Banff Care Home
 Banff, Dounemount CH
 Bridge of Don, Grandholm CH
 Brimmond Court, Aberdeen
 Buckie, Netherha' NH
 Crimond House CH
 Cullen, Wakefield House
 Dufftown, Stephen Hospital
 Elgin, Anderson's CH
 Elgin, Cedarwood CH
 Elgin, The Oaks Hospice
 Ellon, Auchtercrag CH
 Ellon, Ythanvale Home
 Fraserburgh, Buchanan House CH
 Fraserburgh, Kynnaid House
 Fraserburgh, St Modans CH
 Huntly, Alexander Scotts Hospital
 Huntly, Jubilee Hospital
 Insh Day Centre
 Insh Hospital

Insh, Drumdarroch House
 Inverbervie, Castle Lodge
 Inverurie Day Care Centre
 Inverurie, Blythewood Home
 Inverurie, Garioch NH
 Kemnay, Littlewood Court
 Kincorth, Sue Ryder Home
 Laurencekirk, Burnside NH
 Laurencekirk, Kirk Lodge
 Mintlaw, Abbey Court Very Sheltered Housing
 New Deer, Culsh House
 Newtonvale Court, Aberdeen
 Old Meldrum, Westbank House
 Peterhead, Allandale House
 Peterhead, Grange Park CH
 Peterhead, Kirkburn Court CH
 Peterhead, Sunnybank NH
 Peterhead, Willowbank Day Service
 Peterhead, Wyndwell CH
 Portlethen Day Centre
 Portlethen, Lethen Park CH
 Portsoy, Durnhythe Care Home
 Rothienorman, Badenscoth House NH
 Stonehaven, Carron Stroke Group
 Stonehaven, Clashfarquhar House
 Stonehaven, Edenholme CH
 Stonehaven, Forest View Centre
 Stonehaven, Havencourt CH
 Stonehaven, Kincardine & Deeside Befriending
 Stonehaven, Mowat Court NH
 Tarland, Alastrean House
 Turriff Care Home
 Westhill, Pitcairn Lodge CH

HIGHLAND

Ardishaig, Ardfenaig Home
 Aviemore, Glen Centre
 Ballachulish, Abbeyfield House
 Brora, Beachview Lodge
 Campbeltown Hospital
 Campbeltown, Auchinlee RH
 Campbeltown, Kintyre Care Centre
 Campbeltown, Lorne Campbell Court
 Campbeltown, Woodlands Centre
 Cromarty, Shoremill CH
 Dingwall, Fodderty House
 Dingwall, Wyvis House CH
 Dornoch, Oversteps CH
 Dornoch, The Meadows Care Centre
 Drumnadrochit, Glenurquhart Centre
 Fort Augustus, Telford Centre
 Fort William, Belford Hospital
 Fort William, Invernevis House
 Fort William, Moss Park Care Centre
 Gairloch, Strathburn House
 Golspie, Seaforth House

Grantown-on-Spey, Grandview House
 Grantown-on-Spey, Grant House
 Grantown-on-Spey, Ian Charles Hospital
 Helensburgh, Lochside CH
 Helensburgh, Northwood House
 Inveraray, Chalmers Court
 Invergordon, County Community
 Inverness, Ach-an-Eas
 Inverness, Aden House
 Inverness, Cameron House
 Inverness, Cradlehall CH
 Inverness, Elmgrove NH
 Inverness, Fairfield CH
 Inverness, Highland Hospice
 Inverness, Highview House
 Inverness, Isobel Fraser Home
 Inverness, Kingsmills CH
 Inverness, Leonard Cheshire Services
 Inverness, Mackenzie Centre
 Inverness, Mandaville CH
 Inverness, Meallmore Lodge CH
 Inverness, Merkinch Friendship Club
 Inverness, New Craigs Hospital
 Inverness, Raigmore Hospital
 Inverness, Royal Northern Infirmary
 Inverness, Southside NH
 Inverness, Woodlands Centre
 Isle of Islay, Gortanvogie Residential Home
 Kingussie, Wade Centre
 Lochcarron, Howard Doris Centre
 Lochgilphead, MS Therapy Centre Mid-Argyll
 Lochgilphead, Mid Argyll Hospital
 Lybster Day Centre, Lybster
 Muir of Ord, Urray House
 Mull, Bowman Court
 Nairn, Alzheimer Scotland
 Nairn, Bruach House
 Nairn, Carolton CH
 Nairn, Hebron House
 Nairn, St Olaf's CH
 Nairn, Whinnieknowe
 Newtonmore, Main's House
 Oban Hospice
 Oban, Eadar Glinn CH
 Oban, Lynn Court
 Oban, Lynn of Lorne NH
 Oban, North Argyll House
 Portree Hospital
 Portree, Budhmer House
 Portree, Home Farm NH
 Portree, Tigh na Drochaid Resource Centre
 Stornoway, Solas Day Centre
 Strathpeffer, Strathallan House
 Tain, Innis Mhor
 Thurso, Achvarasdal House
 Thurso, Bayview House
 Tongue, North Coast Connection
 Uig, The Haven

Ullapool, Lochbroom House
 Wick, Laurandy Day Centre
 Wick, Pulteney House
 Wick, Riverside House CH
 Wick, Seaview House

LANARKSHIRE

Airdrie, Harry Walker Integrated Day Services
 Airdrie, Monklands District General Hospital
 Airdrie, Rawyards House CH
 Airdrie, Skye View Care Centre
 Bellshill, Frank Ferguson Senior Citizen Centre
 Bellshill, Hatton Lea NH
 Cleland Hospital
 Coatbridge, East Stewart Street Day Centre
 Coatbridge, Millbrae CH
 Coatbridge, Summerlee House
 Cumbernauld, Carrickstone CH
 Cumbernauld, Community Men's Group
 Cumbernauld, Rannoch Lodge NH
 Cumbernauld, The Village NH
 East Kilbride, Hairmyres Hospital
 East Kilbride, McKillop Gardens
 East Kilbride, Meldrum Gardens
 East Kilbride, Meldrum House Day C
 East Kilbride, Westwood House CH
 Hamilton, Abercorn House
 Hamilton, Newberry/Rooney Centre
 Hamilton, Udston Hospital
 Lanark, Beechgrove CH
 Lanark, McClymont House
 Motherwell Integrated Day Service
 Motherwell, Avondale CH
 Motherwell, Park Springs CH
 Rutherford, David Walker Gardens
 Shotts, Rosehall Manor NH
 Stonehouse Hospital
 Strathaven, Avon Park CH
 Strathaven, Collidene CH
 Uddingston, Croftbank House
 Uddingston, Highgate CH
 Uddingston, Rosepark NH
 Wishaw, Belhaven House
 Wishaw, Kirknowe NH
 Wishaw, Netherton Court
 Wishaw, Thornhill House
 Wishaw Integrated Day Service

LOTHIAN

Bathgate, Redmill NH
 Blackburn, Almond Vale Gardens CH
 Bonnyrigg, Midlothian Community Hospital
 Bonnyrigg, Nazareth House
 Bonnyrigg, Springfield Bank Care Centre
 Broxburn Nursing Home
 Broxburn, Holmesview NH
 Dalkeith, Archview Lodge CH
 Dunbar, Belhaven Hospital
 Dunbar, Lammermuir House
 East Linton, Lynton Centre
 Edinburgh, Abercorn CH
 Edinburgh, Astley Ainslie Hospital
 Edinburgh, Balfour House
 Edinburgh, Belleville Lodge
 Edinburgh, Blenham House
 Edinburgh, Braeburn CH
 Edinburgh, Braeside House
 Edinburgh, Braid Hills
 Edinburgh, Chamberlain CH
 Edinburgh, Claremont Park NH
 Edinburgh, Clovenstone CH
 Edinburgh, Cluny Lodge
 Edinburgh, Eagle Lodge
 Edinburgh Chinese Elderly Support Association
 Edinburgh, Edinburgh Royal Infirmary
 Edinburgh, Eildon House
 Edinburgh, Ellen's Glen
 Edinburgh, Erskine Home
 Edinburgh, Ferryfield House
 Edinburgh, Ferrylee CH
 Edinburgh, Findlay House
 Edinburgh, Ford's Road Home
 Edinburgh, Forthland Lodge
 Edinburgh, Jewel House
 Edinburgh, Laverock House
 Edinburgh, Lennox House
 Edinburgh, Letham Park CH
 Edinburgh, Liberton Hospital
 Edinburgh, Lorimer House
 Edinburgh, Lothian Early Onset Support Service
 Edinburgh, Marie Curie Hospice
 Edinburgh, Marionville Court
 Edinburgh, Milan Senior Welfar Organisation
 Edinburgh, Morlich House
 Edinburgh, Murrayfield House
 Edinburgh, Murraypark Hospital
 Edinburgh, North Edinburgh Dementia Centre
 Edinburgh, Porthaven House
 Edinburgh, Queen's Bay Lodge CH
 Edinburgh, Royal Edinburgh Hospital
 Edinburgh, Royal Hospital for Sick Children
 Edinburgh, Royal Victoria Hospital
 Edinburgh, Spring Gardens CH
 Edinburgh, St Columba's Hospice

TAYSIDE

Edinburgh, St Crispin's School
 Edinburgh, Strachan House
 Edinburgh, Struan Lodge
 Edinburgh, The Elms
 Edinburgh, The Royal Blind School
 Edinburgh, Thorburn Manor NH
 Edinburgh, Tor Christian NH
 Edinburgh, Victoria Manor NH
 Edinburgh, Viewpark Home
 Edinburgh, Western General
 Edinburgh, Whitefoord House
 Gorebridge, Newbyres Village
 Gullane, Muirfield CH
 Haddington, East Fortune House
 Haddington, Florabank RH
 Haddington, Herdmanflat Hospital
 Haddington, Hilton Lodge CH
 Lasswade, Drummond Grange CH
 Linlithgow Care Home
 Linlithgow Link Day Centre
 Linlithgow, St Michael's Hospital
 Livingston, Dedridge Good Neighbour Network
 Livingston, Eliburn Day Centre
 Livingston, St John's Hospital
 Loanhead, Pinevilla NH
 Musselburgh, Eskgreen Home
 North Berwick Day Centre
 North Berwick, Astley House
 North Berwick, Edington Cottage Hospital
 North Berwick, Fidra NH
 North Berwick, Leuchie House
 North Berwick, The Abbey
 Pencaitland, Tyneholm Stables NH
 Port Seton, John Bellany Day Centre
 Prestonpans, Harlaw Hill Day Centre
 Tranent, Tranent CH
 Whitburn, Brucefield House
 Whitburn, Tippethill Hospital
 Wilkieston, The Linburn Centre

SHETLAND

Kirkwall, Gilbertson Day Centre
 Kirkwall, St Colm's Day Centre
 Brae, North Haven Care Centre
 Lerwick, Anderson High School
 Lerwick, Gilbert Bain Hospital
 Lerwick, Shetland Stroke Group
 Scalloway, Walter & Joan Gray CH
 Shetland, Overtonlea Home
 Unst, Nordalea CH
 Walls, Wastview CH
 Yell, Isleshavn Care Centre

Aberfeldy, Dalweem Home
 Arbroath, Antiquary House
 Arbroath, Cairnie Lodge NH
 Arbroath, Kendale Hall CH
 Arbroath, Lochlands Resource Centre
 Arbroath, Lunan Court
 Arbroath, Monkbarns House
 Arbroath, Seaton Grove
 Auchterarder, Glencairn House CH
 Auchterarder, St Margaret's Hospital
 Balhousie Luncarty House
 Birnam, Rivendell Home
 Blairgowrie Community Hospital
 Blairgowrie, Beech Manor CH
 Blairgowrie, Hope Park House
 Blairgowrie, Northlands NH
 Blairgowrie, Rosemount CH
 Blairgowrie, Stormont Lodge CH
 Brechin, Bearehill CH
 Brechin, Macmillan Day Unit
 Brechin, Stracathro Hospital
 Brechin, The Glade
 Bridge of Earn, Moncreiffe CH
 Broughty Ferry, Ferry House
 Broughty Ferry, Rosendael
 Broughty Ferry, The Bughties NH
 Carnoustie, Kinloch Care Centre
 Comrie, Dalginross House
 Coupar Angus CH
 Crieff Care Home
 Crieff Community Hospital
 Crieff, Ancaster House CH
 Crieff, Ashdene Court
 Crieff, Ashdene House
 Crieff, Richmond House
 Crieff, The Birches
 Crieff, Wardside House
 Dundee Blind & Partially Sighted Society
 Dundee, Ballumbie Court NH
 Dundee, Benzie CH
 Dundee, Carmichael House NH
 Dundee, Clement Park CH
 Dundee, Craigie House
 Dundee, Forebank CH
 Dundee, Janet Brougham House
 Dundee, Lochleven CH
 Dundee, Menzieshill House
 Dundee, Ninewells Hospital
 Dundee, Pitkerro Care Centre
 Dundee, Riverside View CH
 Dundee, Rose House NH
 Dundee, Roxburghe House
 Dundee, Royal Victoria Hospital
 Dundee, St Margaret's Home
 Dundee, Tayside Children's Hospital
 Dundee, Turriff House

Dunning, Kippen House CH
 Edzell, Glens CH
 Forfar, Beech Hill Court
 Forfar, Beech Hill House
 Forfar, Finavon Court
 Forfar, Lilybank Adult Resource Centre
 Forfar, Lochbank House
 Forfar, St David's CH
 Forfar, The Gables Home
 Kinross, Rachel House
 Kirriemuir, Lidsen CH
 Kirriemuir, Storyville House
 Marywell, Tarriehbank House
 Milnathort, Ashley House
 Monifieth, St Mary's CH
 Monifieth, Tigh-na Muir
 Montrose Care Home
 Montrose, Dorward House
 Montrose, Fordmill NH
 Perth, Beechgrove House
 Perth, Charter Court Sheltered Housing
 Perth, Charterhouse Sheltered Housing
 Perth, Cornhill Macmillan Day Centre
 Perth, Craigieknowes CH
 Perth, Dalguise Centre CH
 Perth, Kincarrathie House
 Perth, Louisebrae CH
 Perth, Murray Royal Hospital
 Perth, New Rannoch Day Centre
 Perth, North Inch House
 Perth, Strathtay House
 Perth, Viewlands House
 Perth, Vision PK
 Pitlochry Care Home
 Pitlochry Community Hospital
 Scone, Catmoor House
 Scone, Robert Douglas Memorial Home

WESTERN ISLES

Carinish (North Uist), Trianaid Home
 Lochboisdale (South Uist), Sacred Heart House
 Stornoway (Lewis), Bethesda Hospice
 Stornoway (Lewis), Dun Berisay Home
 Stornoway (Lewis), Ospadal nan Eilean
 Tarbert (Harris), Harris House

HOW YOU CAN HELP

Make a donation

Online: via JustGiving www.justgiving.com/cfmih/donate

By phone: call 0131 556 5848 to donate over the phone

By text: text MIHS17 £10 (or any amount) to 70070

By post: send a cheque made payable to 'Music in Hospitals' to our Forth Street address: 10 Forth Street, Edinburgh EH1 3LD

Become a Friend of MiH

Join our group of MiH Friends for a minimum donation of just £25 a year (or a standing order from as little as £2 a month). Friends' benefits include: regular newsletters; monthly draw for RSNO concert tickets and priority bookings for MiH events.

Leave a legacy of music

We need your support, now more than ever, to ensure we can continue to provide special moments for people who will need them the most. Legacies are especially valuable to us as they help us to make future plans for the development of our service in Scotland. If you would like more information about how to make provision for Music in Hospitals Scotland in your will, please give our Chief Executive, Florence Burke a call: 0131 556 5848.

Fundraising events

Subscribe via our website to our newsletter and ensure you hear about our upcoming fundraising events near you. Or, run your own fundraising event for the charity – we'll support you all the way!

Spread the word

Follow, like and re-tweet us on Twitter, Facebook, Instagram and YouTube and help us to spread the word about Music in Hospitals far and wide.

Facebook: Music in Hospitals Scotland

Twitter: #MiHScotland

Instagram: mihscotland

YouTube: Music in Hospitals Scotland

Support a local concert

Organisations, businesses, schools and community groups can support live concerts in care settings within their local community. Please contact our Fundraising Team on 0131 556 5848 to discuss how to get started.



Music in Hospitals Scotland
10 Forth Street, Edinburgh EH1 3LD
tel: 0131 556 5848

www.musicinhospitalsScotland.org.uk
info@musicinhospitalsScotland.org.uk



For information on concerts in the rest of the United Kingdom, please contact our registered office: Music in Hospitals, Case House, 85-89 High Street, Walton on Thames, Surrey KT12 1DZ
tel: 01932 260810 info@musicinhospitals.org.uk

Music in Hospitals. A Company Limited by Guarantee Registered in England No. 3138683 VAT No. 356 7549 14 Registered Charity No. 1051659.
Also registered in Scotland No. SC038864.
Reg. Office: Case House, 85-89 High Street, Walton on Thames, Surrey KT12 1DZ